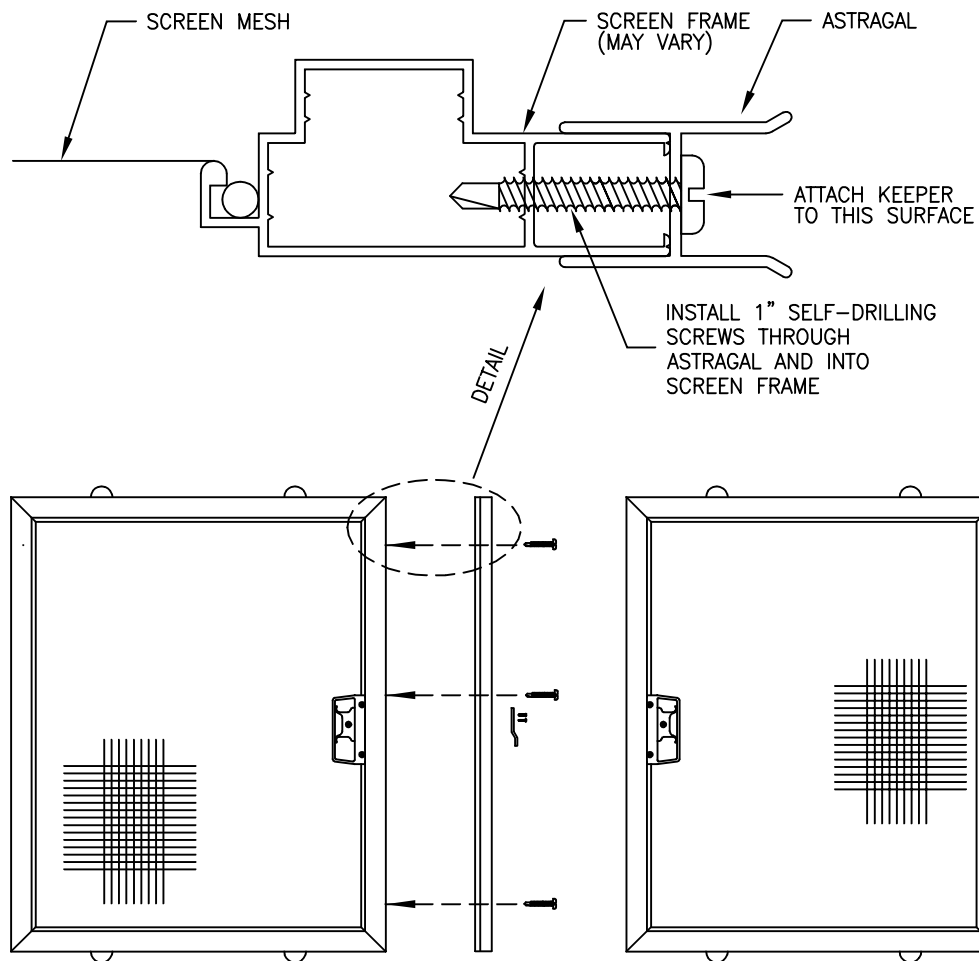


## TOP CUT-AWAY VIEW OF SCREEN FRAME AND ASTRAGAL



A PROPER INSTALLATION OF ASTRAGAL  
(ELEVATION VIEW)

### ASTRAGAL ATTACHMENT INSTRUCTIONS:

- 1) ALIGN ASTRAGAL WITH EDGE OF LESS ACTIVE SCREEN FRAME (HANDLE SIDE) AS SHOWN. (NOTE: SHOWN AS HANDLE FACING HANDLE SCREEN APPLICATION. ASTRAGAL CAN ALSO BE APPLIED TO NON-HANDLE SIDE OF SCREEN IF DESIRED).
- 2) WITH ASTRAGAL IN PLACE, INSTALL 1" LONG SELF-DRILLING SCREWS, SPACED EVENLY, THROUGH ASTRAGAL AND INTO EDGE OF SCREEN. (IF DESIRED, PRE-DRILL, 3/32" HOLES INTO ASTRAGAL AND FRAME BEFORE INSTALLING SCREWS).
- 3) INSTALL KEEPER/STRIKE OF SCREEN WHICH WILL SLIDE INTO ASTRAGAL TO THE ASTRAGAL AT THE PROPER HEIGHT TO ENGAGE THE HANDLE LATCH.
- 4) SCREENS CAN THEN BE OPERATED TOGETHER (LATCHED) OR INDIVIDUALLY (UNLATCHED).

