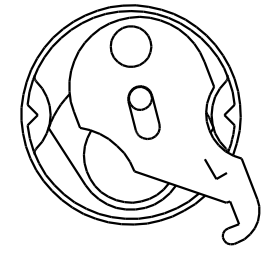
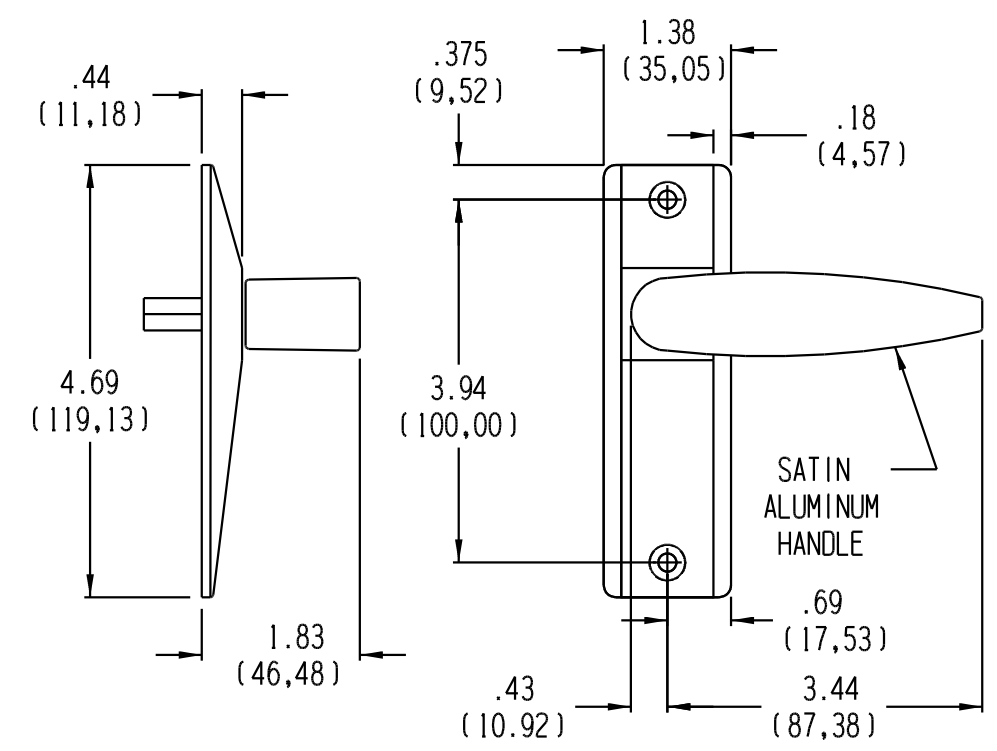
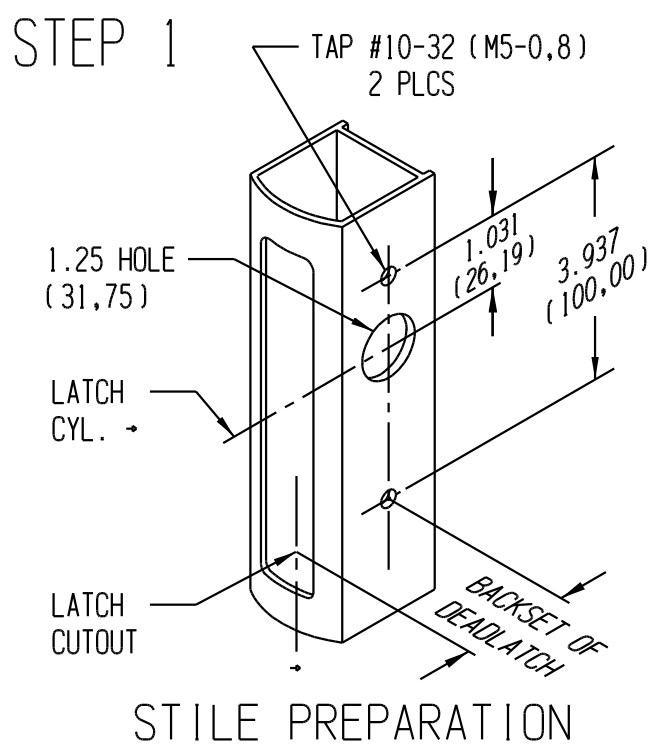


PRODUCT MUST BE INSTALLED
ACCORDING TO ALL APPLICABLE
BUILDING AND LIFE SAFETY CODES



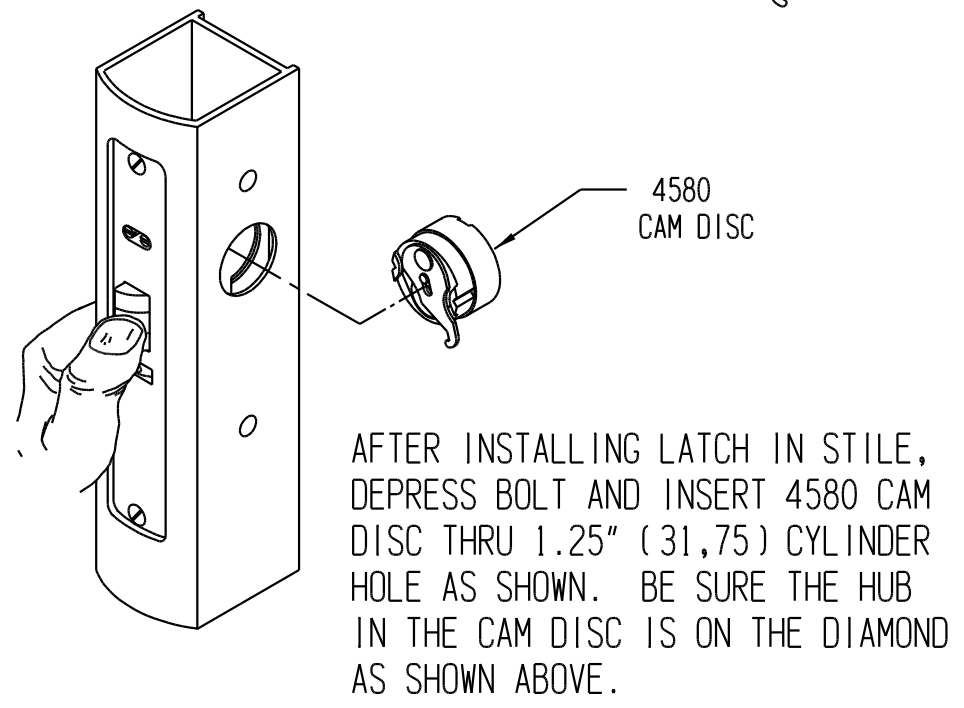
4580 CAM DISC

INCLUDED WITH 4160.
REQUIRED TO OPERATE
4500/4700 SERIES
LATCHES



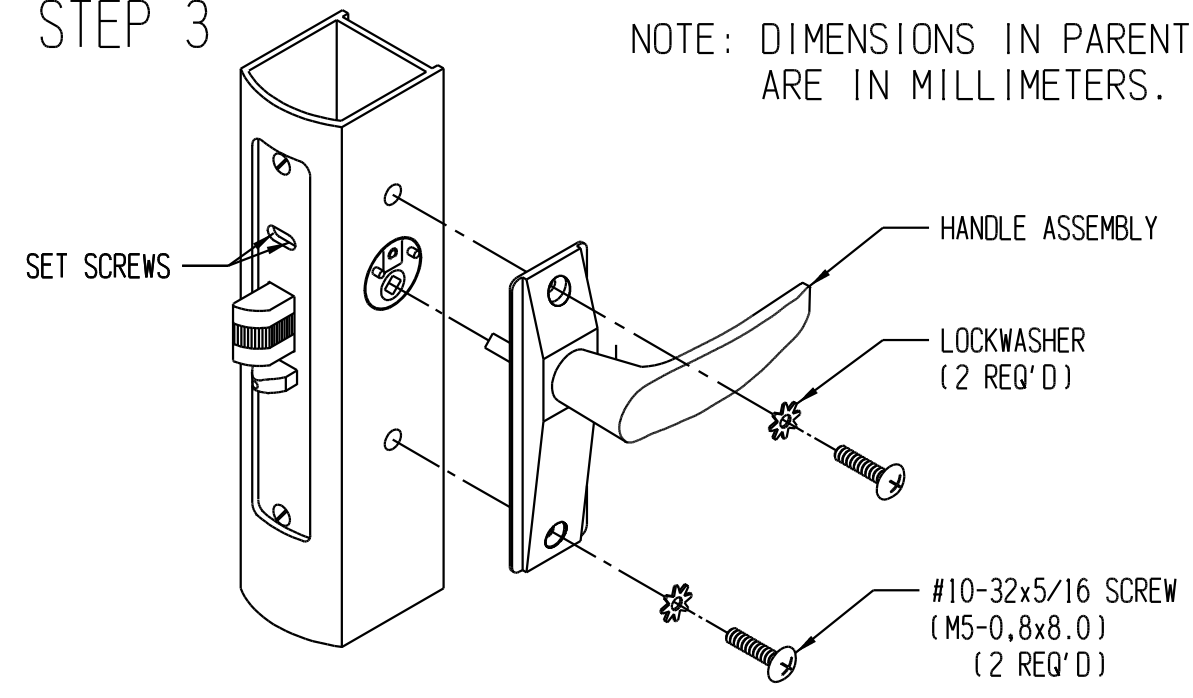
STEP 2

HUB MUST BE ON DIAMOND
FOR PROPER INSTALLATION



STEP 3

NOTE: DIMENSIONS IN PARENTHESES
ARE IN MILLIMETERS.



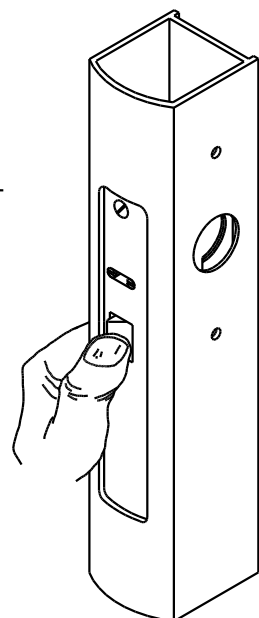
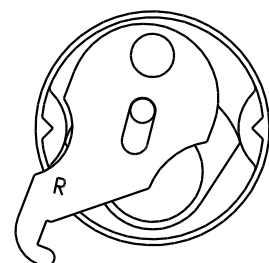
1. INSTALL THE HANDLE ASSEMBLY, INSERTING THE SQUARE SPINDLE INTO THE HUB OF THE CAM DISC. SECURE THE HANDLE ASSEMBLY WITH (2) #10 (M5) SCREWS AND LOCKWASHERS.
2. TIGHTEN THE SET SCREWS IN THE LATCH MOUNTING PLATE, & INSTALL THE LATCH FACE PLATE.

4580 CAM DISC HANDING

LOOKING AT THE EDGE OF THE DOOR DETERMINE ON WHICH SIDE THE HANDLE, OR OTHER OPERATOR IS TO BE INSTALLED.

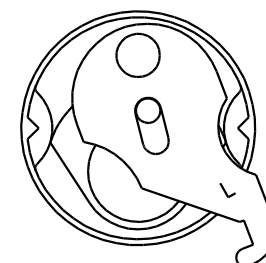
ON THIS SIDE

THE CAM DISC MUST BE HANDED AS SHOWN BELOW.



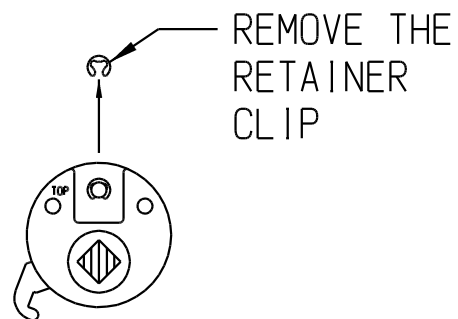
ON THIS SIDE

THE CAM DISC MUST BE HANDED AS SHOWN BELOW.



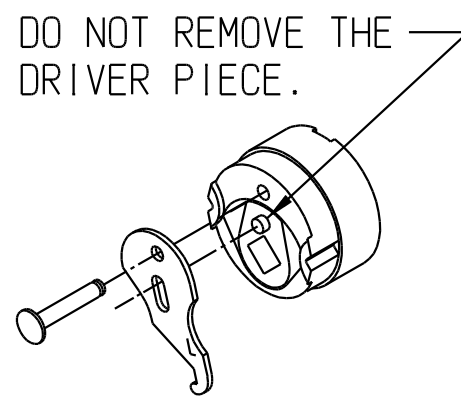
PRODUCT MUST BE INSTALLED ACCORDING TO ALL APPLICABLE BUILDING AND LIFE SAFETY CODES

STEP 1



REMOVE THE RETAINER CLIP

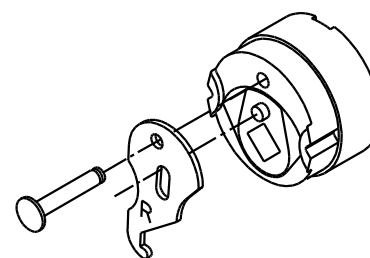
STEP 2



DO NOT REMOVE THE DRIVER PIECE.

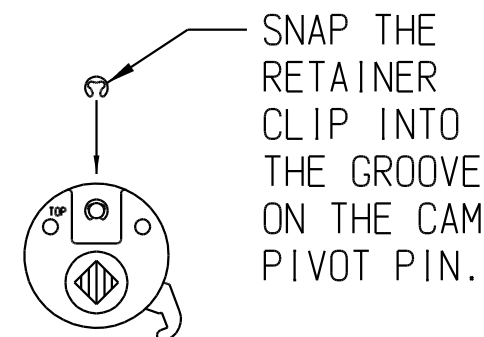
PULL THE CAM PIVOT PIN OUT OF THE CAM DISC AS SHOWN.

STEP 3



TURN THE CAM OVER AND PUSH THE CAM PIVOT PIN THRU THE CAM AND INTO THE CAM DISC AS SHOWN.

STEP 4



SNAP THE RETAINER CLIP INTO THE GROOVE ON THE CAM PIVOT PIN.

INSTALLATION AND REVERSING INSTRUCTIONS FOR 19-428

Step 1: Start with the cam on the right side, let's say:



Step 2: Slip the cam off the handle, flip it over, and you see there is An E ring holding that cam on (the top of the post the e ring holds is the large circle shown at 3 o'clock in the below pic).



Step 3: Slip off the e-ring



Step 4: That enables you to remove the post, flip the cam to the side that says L



Step 5: Reverse the entire procedure, finishing off by re-snapping the e-ring and putting the cam back in the handle.

